

# MA32F10型自封航空加油枪

## MA32F10 Self-sealing Aviation Refueling Nozzle



上海齐宇机电设备有限公司

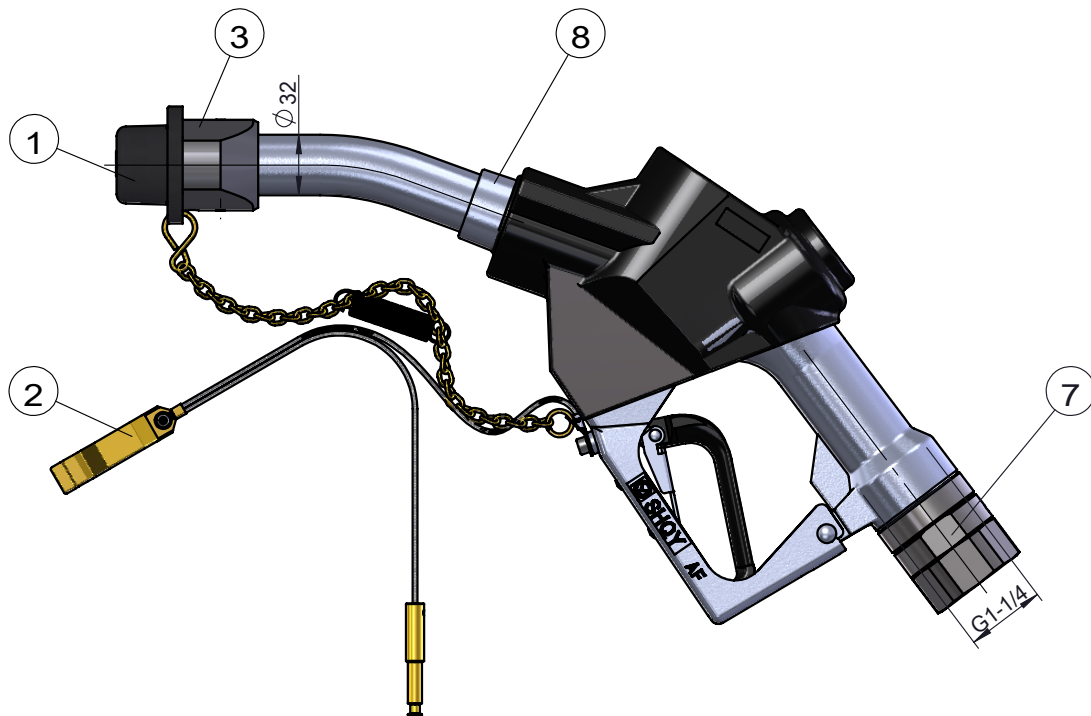
Shanghai Qiyu Mechatronic Equipment Co., Ltd.

MA32F10型自封航空加油枪装配于航空燃料加油补给车，主要用于航空燃料（航空汽油、航空煤油）的安全加注作业。当航空燃料容器加注至满位时，加油枪可自动关闭，有效防止燃料溢出。产品采用专利可回油结构设计，可高效抽回胶管及出油管路内残留油品。加油枪设有三档流量调节，可根据不同加注工况灵活切换，满足多样化加注需求。进油口配置内螺纹G1-1/4旋转接头，出油管外径  $\Phi 32$ 。MA32F10型自封加油枪性能指标符合EN13012和MH/T 6100标准要求。

The MA32F10 self-sealing aviation refueling nozzle is assembled on aviation fuel refueling trucks, mainly used for the safe refueling of aviation fuels (aviation gasoline, aviation kerosene). When the aviation fuel tank is filled to full capacity, the nozzle will automatically shut off to effectively prevent fuel overflow. The product adopts a patented oil return structure, which can efficiently recover residual oil in the hose and outlet pipeline. The nozzle is equipped with three-stage flow adjustment, which can be flexibly switched according to different refueling working conditions to meet diversified refueling requirements. The inlet is equipped with female thread G1-1/4 swivel joint, and the outer diameter of the outlet pipe is  $\Phi 32$ . The performance indicators of the MA32F10 self-sealing refueling nozzle meet the requirements of EN13012 & MH/T6100 standard.

### 技术参数 / Technical Parameters

- 公称通径 / Nominal diameter: DN32;
- 工作压力 / Working pressure: 0.18~0.35 MPa;
- 连接螺纹 / Connection thread: 内螺纹 / female thread G1-1/4;
- 流量范围 / Flow rate range: 25~40 L/min (最小 / minimum), 200 L/min (最大 / maximum);
- 温度范围 / Temperature range: -40°C ~ 55°C.



序号 Item	代号 Part No.	名称	Description	数量 Qty.	备注 Remarks
1	MA32-10	防护罩总成	Protective Cover Assembly	1	
2	MA32-20	导静电线总成	Static Conductive Wire Assembly	1	
3	MA32-01	限位块	Limit Block	1	
7	SF10-0	1-1/4"旋转接头	1-1/4" Swivel Joint	1	
8	180LHY	1-1/4"自封加油枪	1-1/4" Self-sealing Refueling Nozzle	1	

# MA32M10型自封航空加油枪

## MA32M10 Self-sealing Aviation Refueling Nozzle



上海齐宇机电设备有限公司

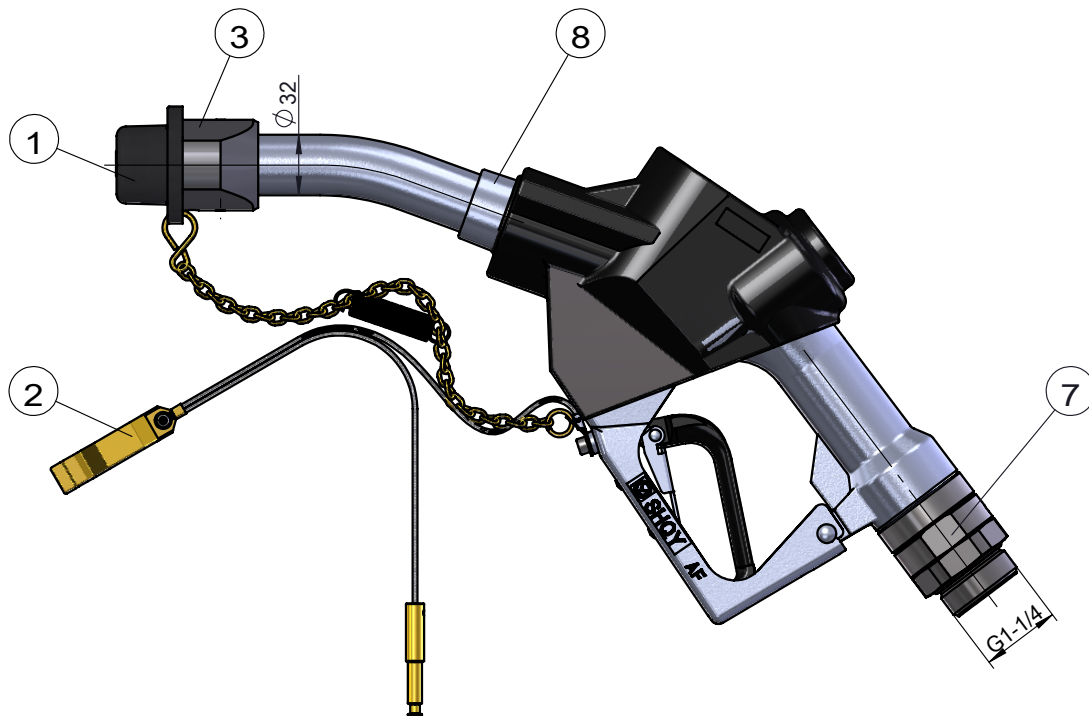
Shanghai Qiyu Mechatronic Equipment Co., Ltd.

MA32M10型自封航空加油枪装配于航空燃料加油补给车，主要用于航空燃料（航空汽油、航空煤油）的安全加注作业。当航空燃料容器加注至满位时，加油枪可自动关闭，有效防止燃料溢出。产品采用专利可回油结构设计，可高效抽回胶管及出油管路内残留油品。加油枪设有三档流量调节，可根据不同加注工况灵活切换，满足多样化加注需求。进油口配置外螺纹G1-1/4旋转接头，出油管外径  $\Phi 32$ 。MA32M10型自封加油枪性能指标符合EN13012和MH/T 6100标准要求。

The MA32M10 self-sealing aviation refueling nozzle is assembled on aviation fuel refueling trucks, mainly used for the safe refueling of aviation fuels (aviation gasoline, aviation kerosene). When the aviation fuel tank is filled to full capacity, the nozzle will automatically shut off to effectively prevent fuel overflow. The product adopts a patented oil return structure, which can efficiently recover residual oil in the hose and outlet pipeline. The nozzle is equipped with three-stage flow adjustment, which can be flexibly switched according to different refueling working conditions to meet diversified refueling requirements. The inlet is equipped with male thread G1-1/4 swivel joint, and the outer diameter of the outlet pipe is  $\Phi 32$ . The performance indicators of the MA32M10 self-sealing refueling nozzle meet the requirements of EN13012 & MH/T6100 standard.

### 技术参数 / Technical Parameters

- 公称通径 / Nominal diameter: DN32;
- 工作压力 / Working pressure: 0.18~0.35 MPa;
- 连接螺纹 / Connection thread: 外螺纹 / Male thread G1-1/4;
- 流量范围 / Flow rate range: 25~40 L/min (最小 / minimum), 200 L/min (最大 / maximum);
- 温度范围 / Temperature range: -40°C ~ 55°C.



序号 Item	代号 Part No.	名称	Description	数量 Qty.	备注 Remarks
1	MA32-10	防护罩总成	Protective Cover Assembly	1	
2	MA32-20	导静电线总成	Static Conductive Wire Assembly	1	
3	MA32-01	限位块	Limit Block	1	
7	SM10-0	1-1/4"旋转接头	1-1/4" Swivel Joint	1	
8	180LHY	1-1/4"自封加油枪	1-1/4" Self-sealing Refueling Nozzle	1	

# MA32S45型自封航空加油枪

## MA32S45 Self-sealing Aviation Refueling Nozzle



上海齐宇机电设备有限公司

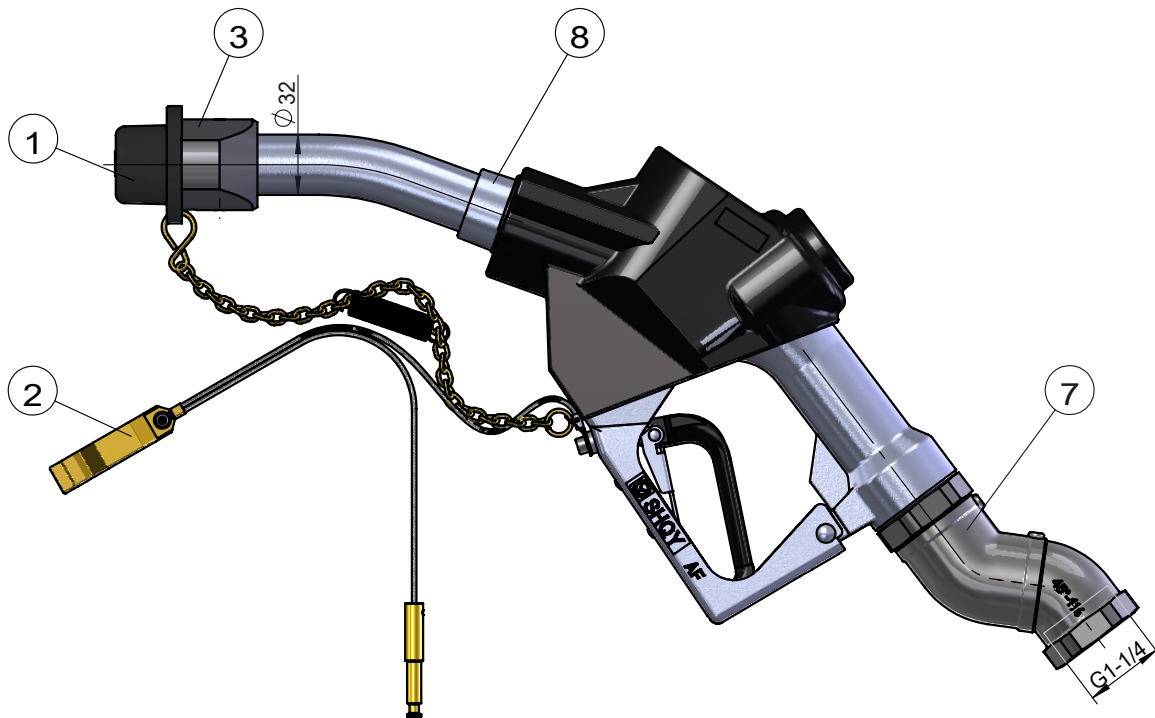
Shanghai Qiyu Mechatronic Equipment Co., Ltd.

MA32S45型自封航空加油枪装配于航空燃料加油补给车，主要用于航空燃料（航空汽油、航空煤油）的安全加注作业。当航空燃料容器加注至满位时，加油枪可自动关闭，有效防止燃料溢出。产品采用专利可回油结构设计，可高效抽回胶管及出油管路内残留油品。加油枪设有三档流量调节，可根据不同加注工况灵活切换，满足多样化加注需求。进油口配置内螺纹G1-1/4万向旋转接头，出油管外径 $\Phi 32$ 。MA32S45型自封加油枪性能指标符合EN13012和MH/T 6100标准要求。

The MA32S45 self-sealing aviation refueling nozzle is assembled on aviation fuel refueling trucks, mainly used for the safe refueling of aviation fuels (aviation gasoline, aviation kerosene). When the aviation fuel tank is filled to full capacity, the nozzle will automatically shut off to effectively prevent fuel overflow. The product adopts a patented oil return structure, which can efficiently recover residual oil in the hose and outlet pipeline. The nozzle is equipped with three-stage flow adjustment, which can be flexibly switched according to different refueling working conditions to meet diversified refueling requirements. The inlet is equipped with female thread G1-1/4 universal swivel joint, and the outer diameter of the outlet pipe is  $\Phi 32$ . The performance indicators of the MA32S45 self-sealing refueling nozzle meet the requirements of EN13012 & MH/T6100 standard.

### 技术参数 / Technical Parameters

- 公称通径 / Nominal diameter: DN32;
- 工作压力 / Working pressure: 0.18~0.35 MPa;
- 连接螺纹 / Connection thread: 内螺纹 / female thread G1-1/4;
- 流量范围 / Flow rate range: 25~40 L/min (最小 / minimum), 200 L/min (最大 / maximum);
- 温度范围 / Temperature range: -40°C ~ 55°C.



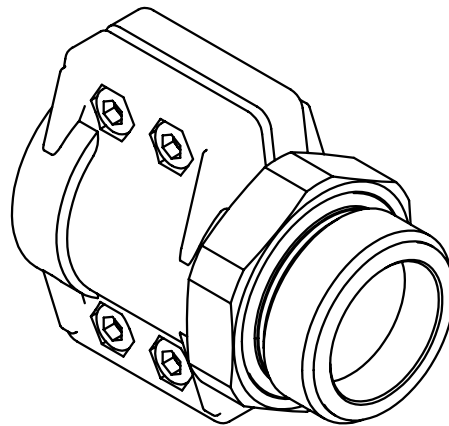
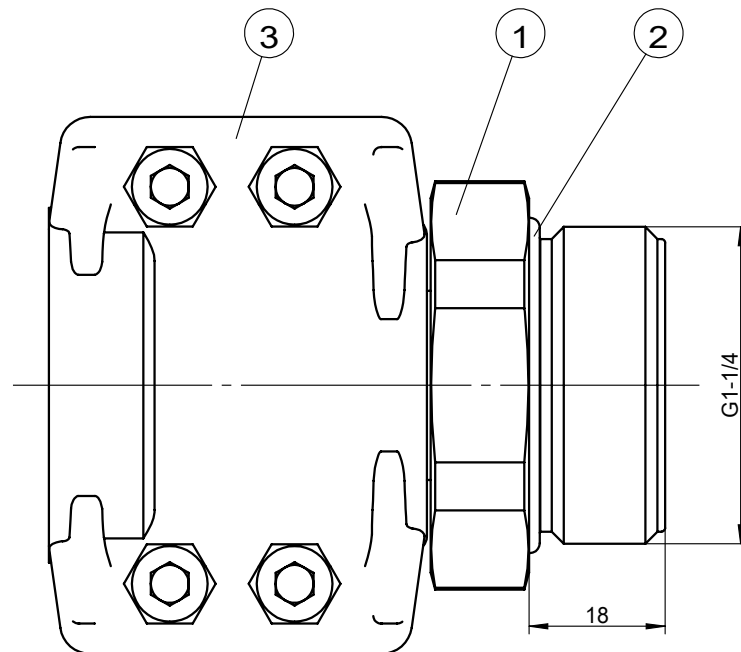
序号 Item	代号 Part No.	名称	Description	数量 Qty.	备注 Remarks
1	MA32-10	防护罩总成	Protective Cover Assembly	1	
2	MA32-20	导静电线总成	Static Conductive Wire Assembly	1	
3	MA32-01	限位块	Limit Block	1	
7	S45F10-0	45°万向接头	45° Universal Swivel Joint	1	
8	180LHY	1-1/4"自封加油枪	1-1/4" Self-sealing Refueling Nozzle	1	

# 1"软管接头总成MG10-25

## 1" Hose Fitting Assembly MG10-25



上海齐宇机电设备有限公司  
Shanghai Qiyu Mechatronic Equipment Co., Ltd.



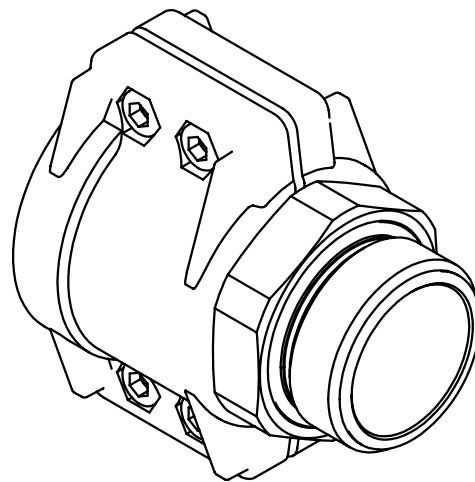
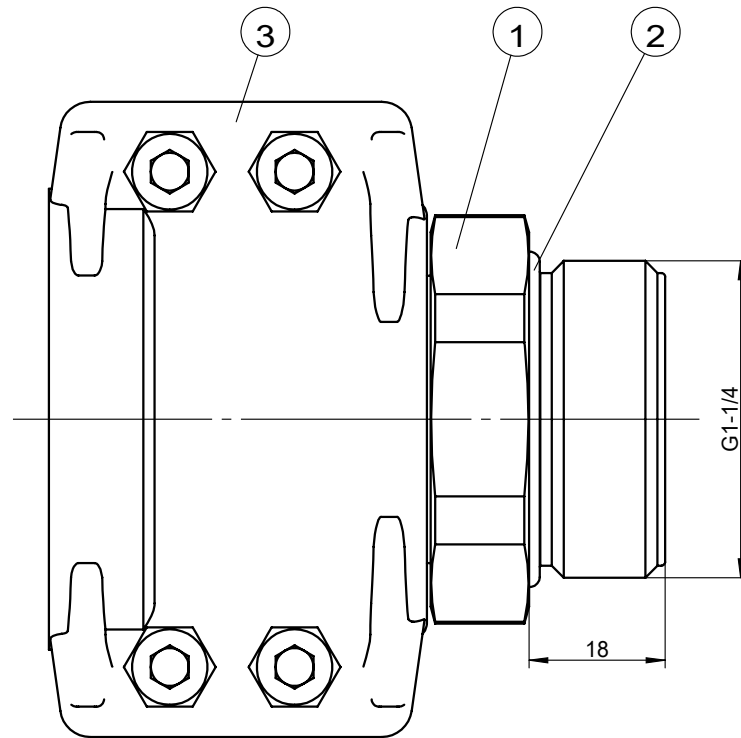
序号 Item	代号 Part No.	名称	Description	数量 Qty.	备注 Remarks
1	MG10-25-01	1"软管接头	1" Hose Fitting	1	
2	37.77X2.62	O形密封圈	O-ring	1	
3	SC25-0	哈夫	Half	1	

# 1.5"软管接头总成MG10-38

## 1.5" Hose Fitting Assembly MG10-38



上海齐宇机电设备有限公司  
Shanghai Qiyu Mechatronic Equipment Co., Ltd.



序号 Item	代号 Part No.	名称	Description	数量 Qty.	备注 Remarks
1	MG10-38-01	1.5"软管接头	1.5" Hose Fitting	1	
2	37.77X2.62	O形密封圈	O-ring	1	
3	SC38-0	哈夫	Half	1	

# 1-1/4" 旋转接头

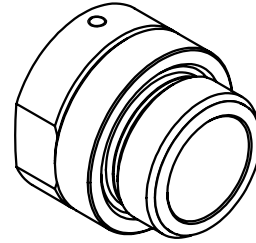
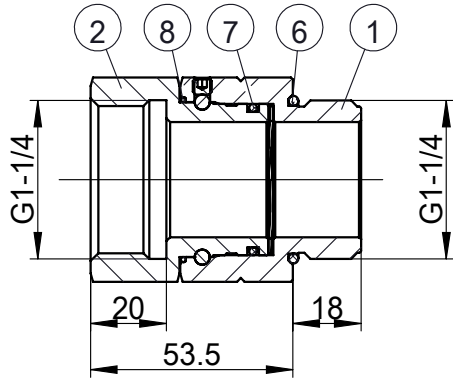
## 1-1/4" Swivel Joint



上海齐宇机电设备有限公司  
Shanghai Qiyu Mechatronic Equipment Co., Ltd.

### 1. SF10型旋转接头

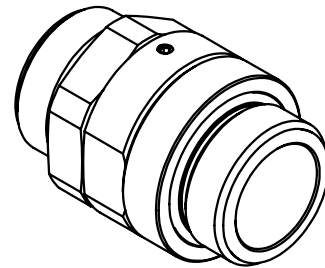
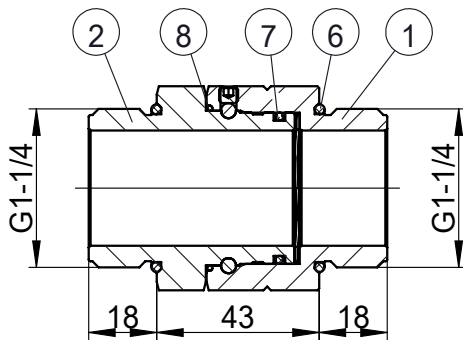
#### SF10 Swivel Joint



序号 Item	代号 Part No.	名称	Description	数量 Qty.	备注 Remarks
1	SF10-01	外丝接头	Male Thread Fitting	1	SUS304
2	SF10-02	内丝接头	Female Thread Fitting	1	SUS303
6	37.77X2.62	O形密封圈	O-ring	1	
7	35X2.5	O形密封圈	O-ring	1	FVMQ70
8	40X1.5	O形密封圈	O-ring	1	

### 2. SM10型旋转接头

#### SM10 Swivel Joint



序号 Item	代号 Part No.	名称	Description	数量 Qty.	备注 Remarks
1	SF10-01	外丝接头	Male Thread Fitting	1	SUS304
2	SM10-02	外丝接头	Male Thread Fitting	1	SUS303
6	37.77X2.62	O形密封圈	O-ring	2	
7	35X2.5	O形密封圈	O-ring	1	FVMQ70
8	40X1.5	O形密封圈	O-ring	1	

# S45F10型加油枪专用万向旋转接头

## S45F10 Universal Swivel Joint for Refueling Nozzle



上海齐宇机电设备有限公司

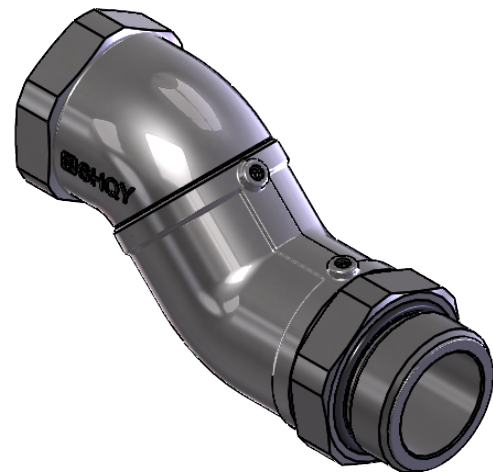
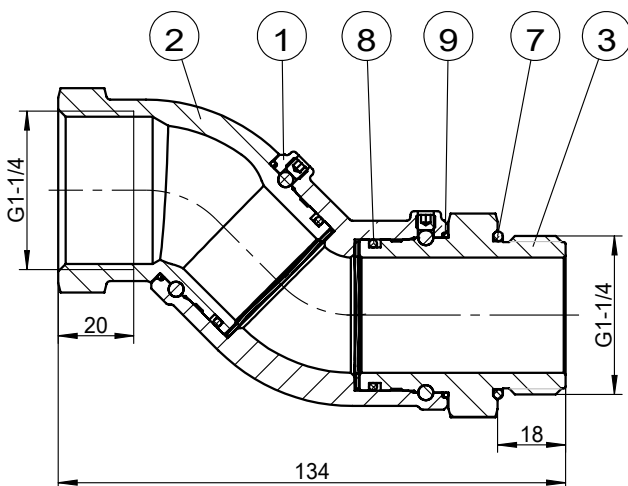
Shanghai Qiyu Mechatronic Equipment Co., Ltd.

加油枪专用万向旋转接头（万向节）安装于加油枪与输油胶管的连接位置，适用于汽油、柴油、煤油等成品油加注场景。接头可实现360°自由旋转并支持角度偏转，能有效减少加油作业中的胶管缠绕、管路憋压、拉扯磨损和操作卡顿，提升现场操作灵活性，同时有助于延长加油枪与输油胶管的使用寿命。产品结构紧凑、转动灵活，适合加油站、油库、移动加油设备及相关成品油输送系统配套使用。

The universal swivel joint is installed between a refueling nozzle and the fuel delivery hose. It is designed for refined fuel dispensing applications such as gasoline, diesel, kerosene and other refined fuels. The joint provides 360-degree free rotation with angular deflection, helping reduce hose twisting, line pressure buildup, pulling wear and operation stiffness during refueling. Its compact and flexible design improves handling efficiency, extends the service life of both the nozzle and the hose, and is suitable for supporting use in gas stations, oil depots, mobile refueling equipment and related refined fuel delivery systems.

### 技术参数 / Technical Parameters

- 公称通径 / Nominal Diameter: DN32;
- 结构型式 / Structure Type: 双滚道滚珠结构 / Double Raceway Ball Bearing Structure;
- 螺纹规格 / Thread: G1-1/4;
- 旋转功能 / Rotation: 360°自由旋转 / 360° free rotation;
- 偏转能力 / Angular Deflection: 支持角度偏转，缓解胶管受力 / Supports angular deflection to reduce hose stress;
- 安装位置 / Installation Position: 加油枪与输油胶管连接处 / Between nozzle and fuel hose;
- 适用介质 / Applicable Media: 汽油、柴油、煤油等成品油 / Gasoline, diesel, kerosene and other refined fuels;
- 主体材料 / Primary Body Material: SUS304, SUS303.



序号 Item	代号 Part No.	名称	Description	数量 Qty.	备注 Remarks
1	S45F10-01	连接弯头	Connection Elbow	1	SUS304
2	S45F10-02	内丝弯头	Female Thread Elbow	1	SUS304
3	SM10-02	外丝接头	Male Thread Fitting	1	SUS303
7	37.77X2.62	O形密封圈	O-ring	1	
8	35X2.5	O形密封圈	O-ring	2	FVMQ70
9	40X1.5	O形密封圈	O-ring	2	