

高（低）液位阀

High -Low Liquid Level Valve

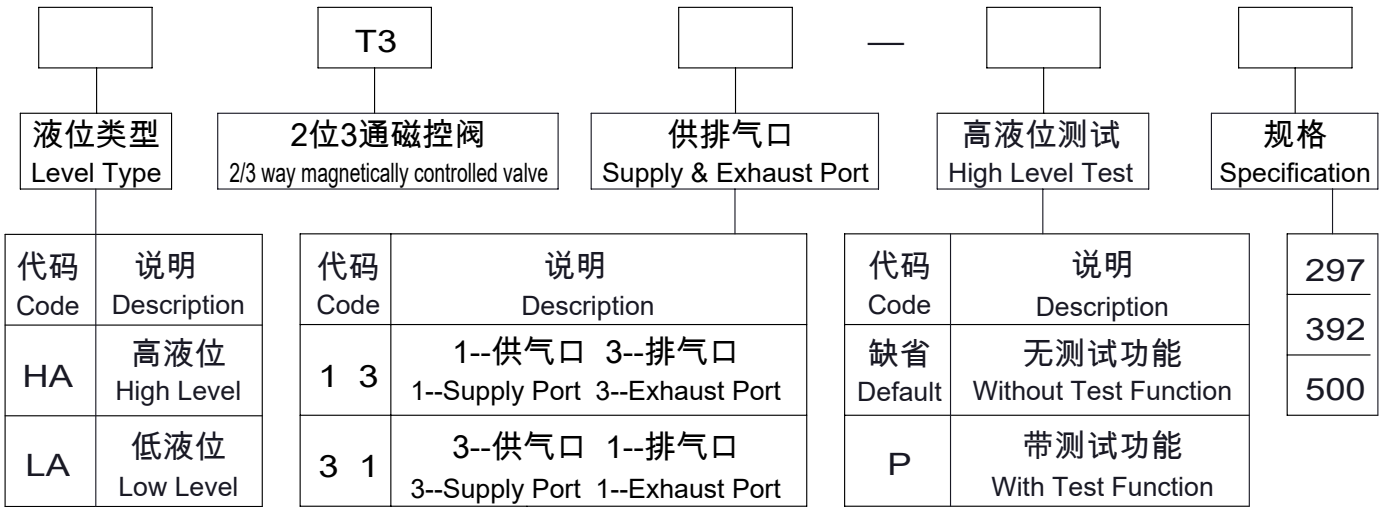


上海齐宇机电设备有限公司

Shanghai Qiyu Mechatronic Equipment Co.Ltd.

液位阀型号编制方法

Liquid Level Valve Model Designation Method



示例：型号 HAT313-P500

完整解读：高液位型、2位3通磁控阀、1口供气/3口排气、具备高液位测试功能、500规格液位阀。

Example: Model HAT313-P500

Full Interpretation: High liquid level type, 2-position 3-way magnetic control valve, 1-supply port & 3-exhaust ports, with high level test function, 500 specification liquid level valve.

HAT313-392型高液位阀

HAT313-392 High-Level Valve



上海齐宇机电设备有限公司
Shanghai Qiyu Mechatronic Equipment Co., Ltd.

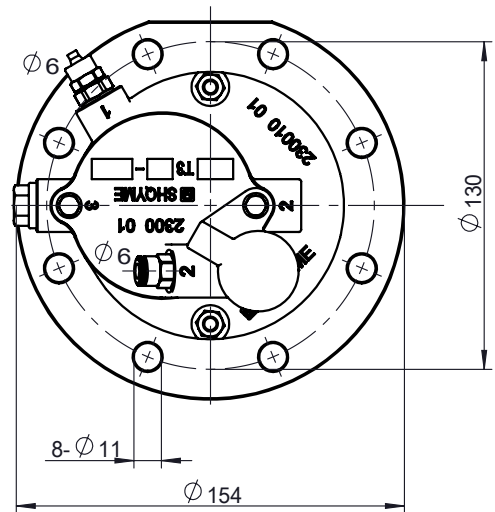
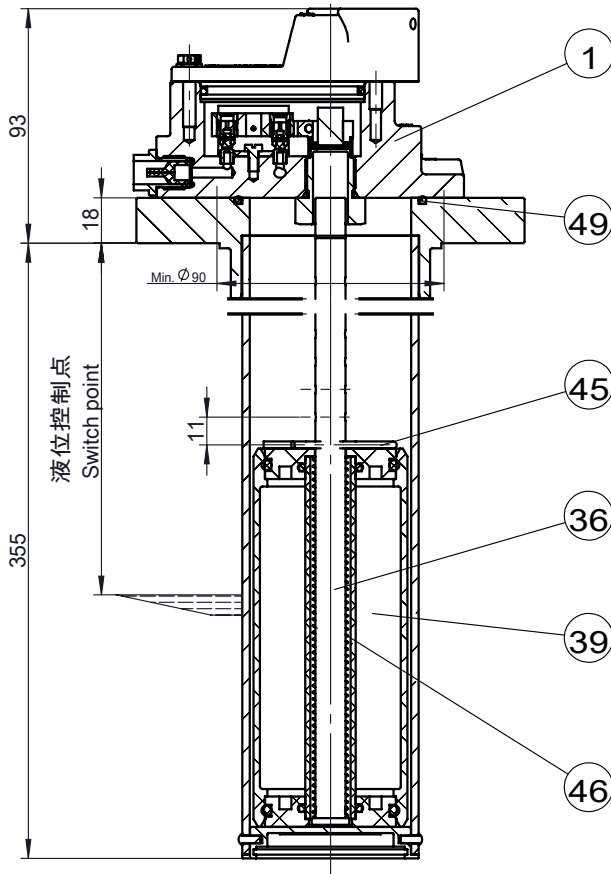
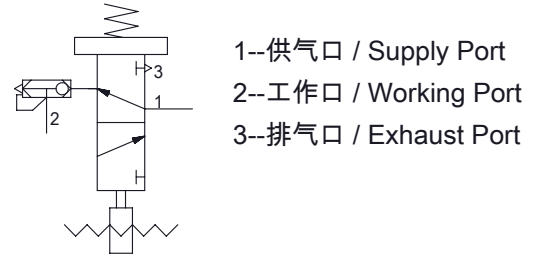
HAT313(31)型系列高液位阀是专为罐式加油车设计的，其功能是控制油罐装油时的最高液位，并具有调节功能，能够精确地控制液面的最高位置。这种设计为罐式加油车提供了稳定、可靠的装油性能，确保液位始终保持在安全、高效的范围内。

The HAT313(31) series high liquid level valve is specially designed for tank refueling trucks. It is used to control the maximum liquid level of the oil tank during loading, and is equipped with an adjustment function to precisely control the maximum position of the liquid level.

This design provides stable and reliable filling performance for tank refueling trucks, ensuring that the liquid level is always maintained within a safe and efficient range.

技术参数 / Technical Parameters

1. 工作压力 / Working Pressure: 0.8 MPa;
2. 温度范围 / Temperature Range: -40°C ~ 80°C;
3. 主体材料 / Primary Material: Aluminum Alloy.



水液位控制点 Switch point in water	燃油液位控制点 Switch point in fuel oil	可调范围 Adjustable steps	备注 Note
≈250	≈220	16×11	

序号 Item	代号 Part No.	名称	Description	数量 Qty.	备注 Remarks
1	AT2313-0	2位3通磁控阀	2/3-way magnetic control valve	1	
3	NV3S392-20S	调节杆	Adjusting rod	1	
4	NV3S-30	浮筒	Float chamber	1	
5	NV3S-01	弹性插销	Elastic pin	1	
6	NV3S-02	弹簧	Spring	1	
9	70X3	O形密封圈	O-ring	1	

HAT313-500型高液位阀

HAT313-500 High-Level Valve



上海齐宇机电设备有限公司
Shanghai Qiyu Mechatronic Equipment Co., Ltd.

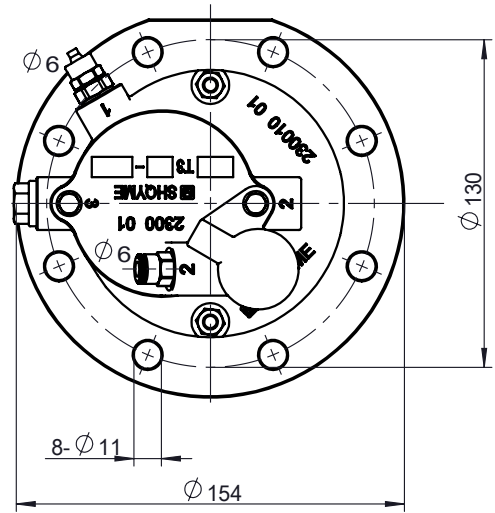
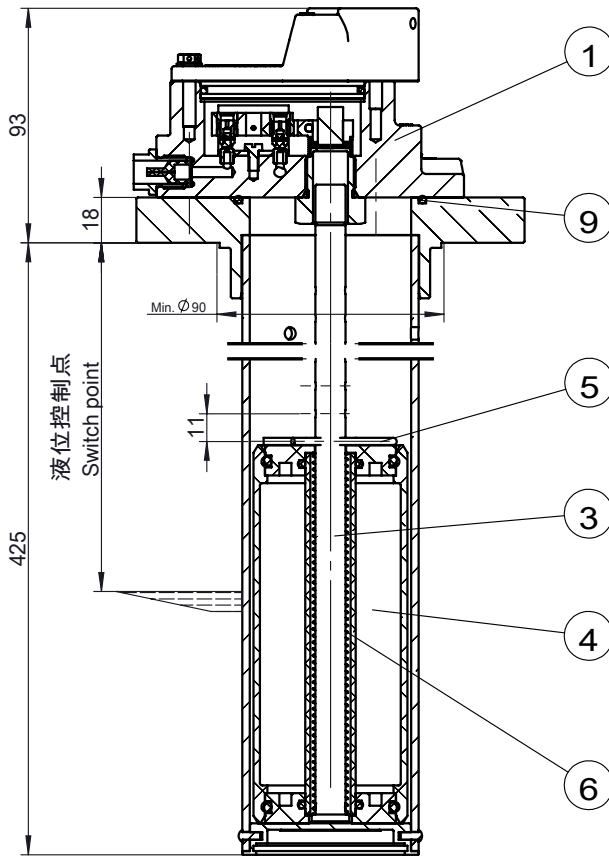
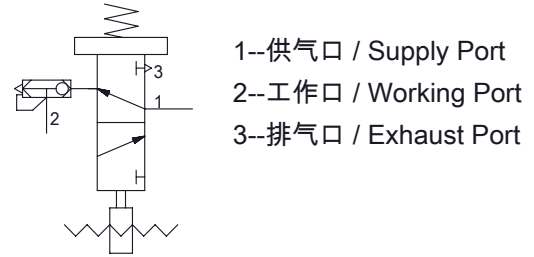
HAT313(31)型系列高液位阀是专为罐式加油车设计的，其功能是控制油罐装油时的最高液位，并具有调节功能，能够精确地控制液面的最高位置。这种设计为罐式加油车提供了稳定、可靠的装油性能，确保液位始终保持在安全、高效的范围内。

The HAT313(31) series high liquid level valve is specially designed for tank refueling trucks. It is used to control the maximum liquid level of the oil tank during loading, and is equipped with an adjustment function to precisely control the maximum position of the liquid level.

This design provides stable and reliable filling performance for tank refueling trucks, ensuring that the liquid level is always maintained within a safe and efficient range.

技术参数 / Technical Parameters

1. 工作压力 / Working Pressure: 0.8 MPa;
2. 温度范围 / Temperature Range: -40°C ~ 80°C;
3. 主体材料 / Primary Material: Aluminum Alloy.



水液位控制点 Switch point in water		燃油液位控制点 Switch point in fuel oil	可调范围 Adjustable steps	备注 Note	
≈320		≈290	22×11		
序号 Item	代号 Part No.	名称	Description	数量 Qty.	备注 Remarks
1	AT2313-0	2位3通磁控阀	2/3-way magnetic control valve	1	
3	NV3S500-20	调节杆	Adjusting rod	1	
4	NV3S-30	浮筒	Float chamber	1	
5	NV3S-01	弹性插销	Elastic pin	1	
6	NV3S-02	弹簧	Spring	1	
9	70X3	O形密封圈	O-ring	1	

HAT313-P500型高液位阀

HAT313-P500 High-Level Valve



上海齐宇机电设备有限公司

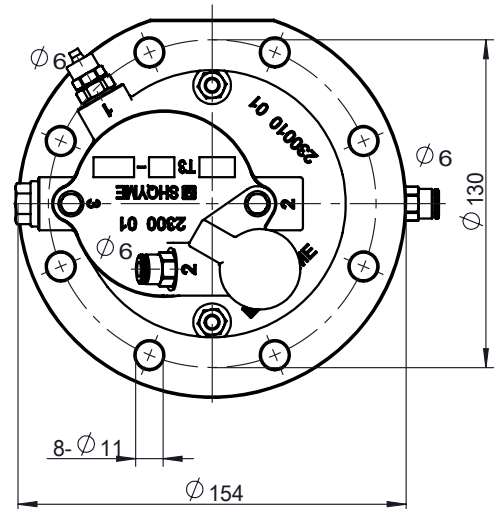
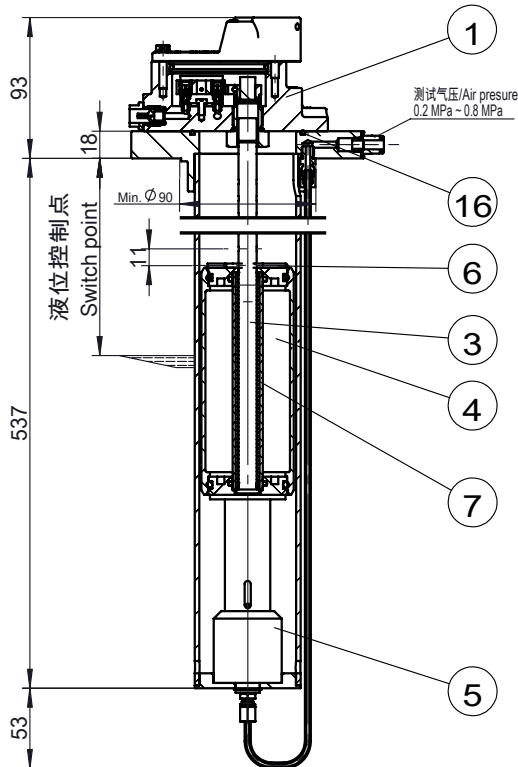
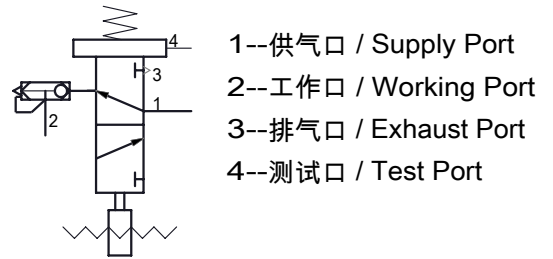
Shanghai Qiyu Mechatronic Equipment Co., Ltd.

HAT313(31)-P型系列高液位阀是一种具有测试功能且灵敏度高的高液位控制阀，其测试口的供气压力在0.2MPa ~ 0.8MPa范围内均可正常进行测试。在测试过程中，测试压力经过测试单元转换成模拟浮筒浮力的弹力，以驱动浮筒进行高液位模拟测试。如果测试口无法控制装油底阀的关闭，则可能表示高液位控制阀已失灵，需要进行检修。反之，如果能够正常控制装油底阀的关闭，则说明高液位控制阀性能正常。

The HAT313(31)-P series high liquid level valve is a high-sensitivity control valve with integrated test function. It can operate normally when the air supply pressure at the test port is within the range of 0.2 MPa ~ 0.8 MPa. During testing, the test pressure is converted by the test unit into elastic force simulating the buoyancy of the float, so as to drive the float and perform a high liquid level simulation test. If the test port fails to control the closing of the loading bottom valve, it may indicate that the high liquid level control valve is malfunctioning and requires maintenance. On the contrary, if it can properly control the closing of the loading bottom valve, the performance of the high liquid level control valve is normal.

技术参数 / Technical Parameters

1. 工作压力 / Working Pressure: 0.8 MPa;
2. 测试口4最小压力 / Minimum Pressure at Test Port 4: 0.2 MPa;
3. 温度范围 / Temperature Range: -40°C ~ 80°C;
4. 主体材料 / Primary Material: Aluminum Alloy.



水液位控制点 Switch point in water		燃油液位控制点 Switch point in fuel oil	可调范围 Adjustable steps	备注 Note	
≈320		≈290	22×11		
序号 Item	代号 Part No.	名称	Description	数量 Qty.	备注 Remarks
1	AT2313-0	2位3通磁控阀	2/3-way magnetic control valve	1	
3	NV3S500-20	调节杆	Adjusting rod	1	
4	NV3S-30	浮筒	Float chamber	1	
5	NV3S-40	高液位测试器	High-level tester	1	
6	NV3S-01	弹性插销	Elastic pin	1	
7	NV3S-02	弹簧	Spring	1	
16	70X3	O形密封圈	O-ring	1	

HAT331-500型高液位阀

HAT331-500 High-Level Valve



上海齐宇机电设备有限公司
Shanghai Qiyu Mechatronic Equipment Co., Ltd.

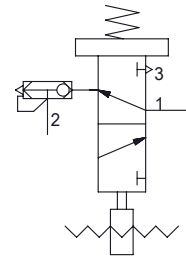
HAT313(31)型系列高液位阀是专为罐式加油车设计的，其功能是控制油罐装油时的最高液位，并具有调节功能，能够精确地控制液面的最高位置。这种设计为罐式加油车提供了稳定、可靠的装油性能，确保液位始终保持在安全、高效的范围内。

The HAT313(31) series high liquid level valve is specially designed for tank refueling trucks. It is used to control the maximum liquid level of the oil tank during loading, and is equipped with an adjustment function to precisely control the maximum position of the liquid level.

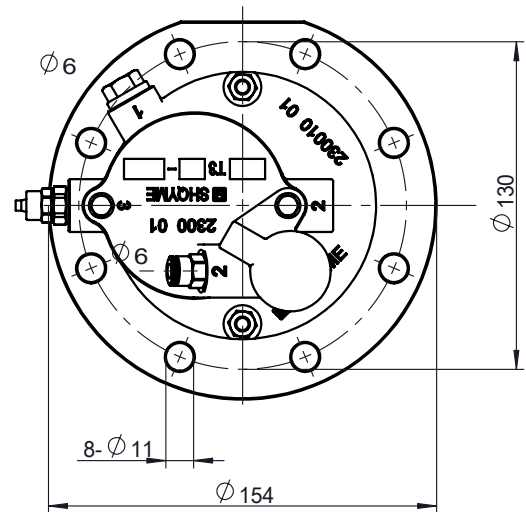
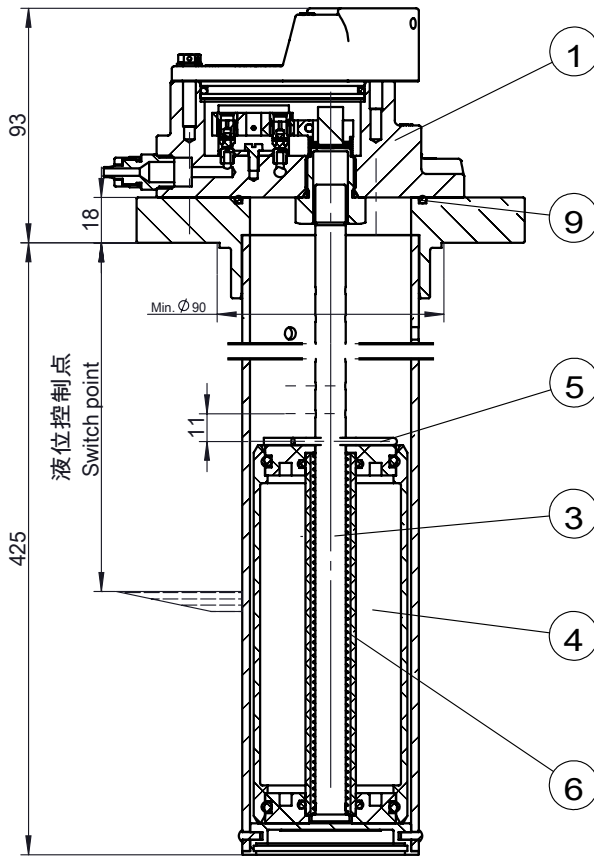
This design provides stable and reliable filling performance for tank refueling trucks, ensuring that the liquid level is always maintained within a safe and efficient range.

技术参数 / Technical Parameters

1. 工作压力 / Working Pressure: 0.8 MPa;
2. 温度范围 / Temperature Range: -40°C ~ 80°C;
3. 主体材料 / Primary Material: Aluminum Alloy.



- 3--供气口 / Supply Port
- 2--工作口 / Working Port
- 1--排气口 / Exhaust Port



水液位控制点 Switch point in water		燃油液位控制点 Switch point in fuel oil	可调范围 Adjustable steps	备注 Note	
≈320		≈290	22×11		
序号 Item	代号 Part No.	名称	Description	数量 Qty.	备注 Remarks
1	AT2331-0	2位3通磁控阀		1	
3	NV3S500-20	调节杆	Adjusting rod	1	
4	NV3S-30	浮筒	Float chamber	1	
5	NV3S-01	弹性插销	Elastic pin	1	
6	NV3S-02	弹簧	Spring	1	
9	70X3	O形密封圈	O-ring	1	

HAT331-P500型高液位阀

HAT331-P500 High-Level Valve



上海齐宇机电设备有限公司

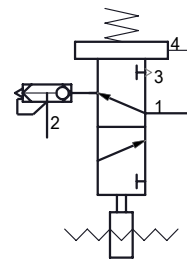
Shanghai Qiyu Mechatronic Equipment Co., Ltd.

HAT313(31)-P型系列高液位阀是一种具有测试功能且灵敏度高的高液位控制阀，其测试口的供气压力在0.2MPa ~ 0.8MPa范围内均可正常进行测试。在测试过程中，测试压力经过测试单元转换成模拟浮筒浮力的弹力，以驱动浮筒进行高液位模拟测试。如果测试口无法控制装油底阀的关闭，则可能表示高液位控制阀已失灵，需要进行检修。反之，如果能够正常控制装油底阀的关闭，则说明高液位控制阀性能正常。

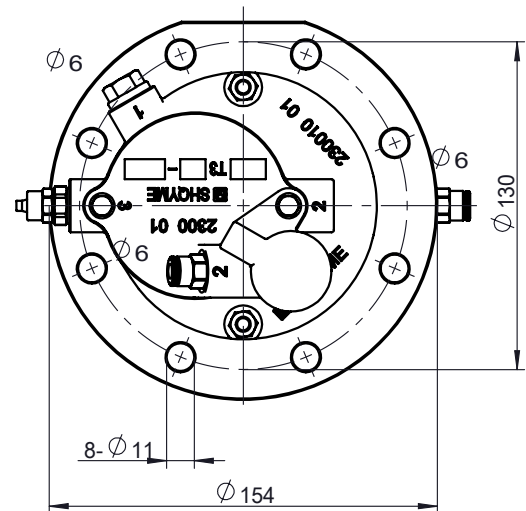
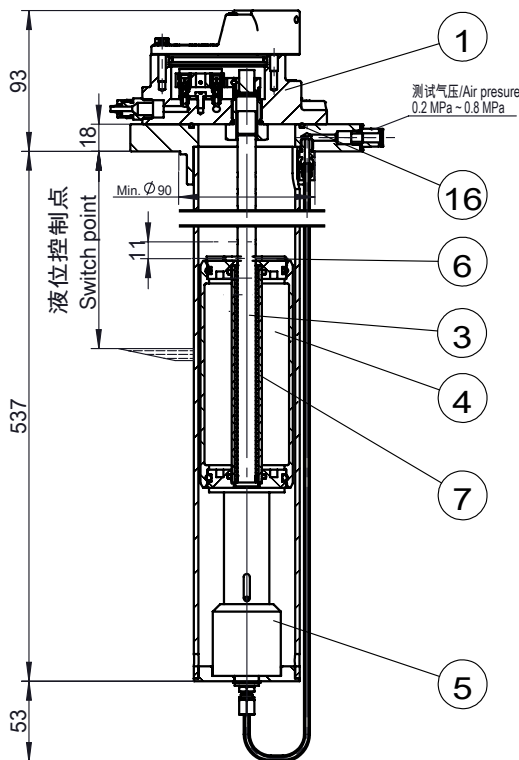
The HAT313(31)-P series high liquid level valve is a high-sensitivity control valve with integrated test function. It can operate normally when the air supply pressure at the test port is within the range of 0.2 MPa ~ 0.8 MPa. During testing, the test pressure is converted by the test unit into elastic force simulating the buoyancy of the float, so as to drive the float and perform a high liquid level simulation test. If the test port fails to control the closing of the loading bottom valve, it may indicate that the high liquid level control valve is malfunctioning and requires maintenance. On the contrary, if it can properly control the closing of the loading bottom valve, the performance of the high liquid level control valve is normal.

技术参数 / Technical Parameters

1. 工作压力 / Working Pressure: 0.8 MPa;
2. 测试口4最小压力 / Minimum Pressure at Test Port 4: 0.2 MPa;
3. 温度范围 / Temperature Range: -40°C ~ 80°C;
4. 主体材料 / Primary Material: Aluminum Alloy.



- 3--供气口 / Supply Port
- 2--工作口 / Working Port
- 1--排气口 / Exhaust Port
- 4--测试口 / Test Port



水液位控制点 Switch point in water		燃油液位控制点 Switch point in fuel oil	可调范围 Adjustable steps	备注 Note	
≈320		≈290	22×11		
序号 Item	代号 Part No.	名称	Description	数量 Qty.	备注 Remarks
1	AT2331-0	2位3通磁控阀	3/2-way magnetic control valve	1	
3	NV3S500-20	调节杆	Adjusting rod	1	
4	NV3S-30	浮筒	Float chamber	1	
5	NV3S-40	高液位测试器	High-level tester	1	
6	NV3S-01	弹性插销	Elastic pin	1	
7	NV3S-02	弹簧	Spring	1	
16	70X3	O形密封圈	O-ring	1	

LAT313-392型低液位阀

LAT313-392 Low-Level Valve



上海齐宇机电设备有限公司

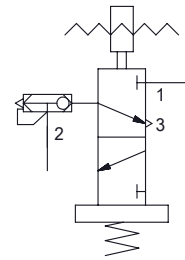
Shanghai Qiyu Mechatronic Equipment Co., Ltd.

LAT313型系列低液位阀是专为罐式加油车设计的，其功能是控制油罐加油时的最低液位，并具有调节功能，能够精确地控制液面的最低位置。这种设计为罐式加油车提供了稳定、可靠的加油性能，确保液位始终保持在安全、高效的范围内。

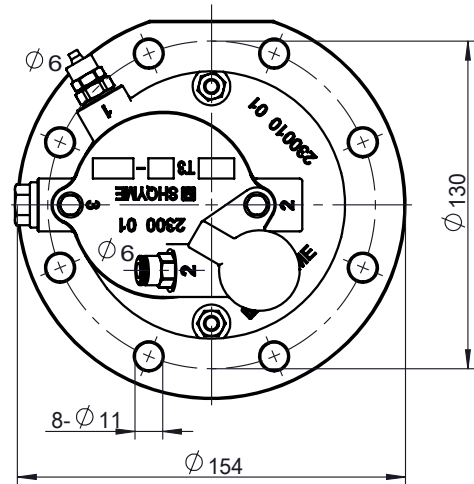
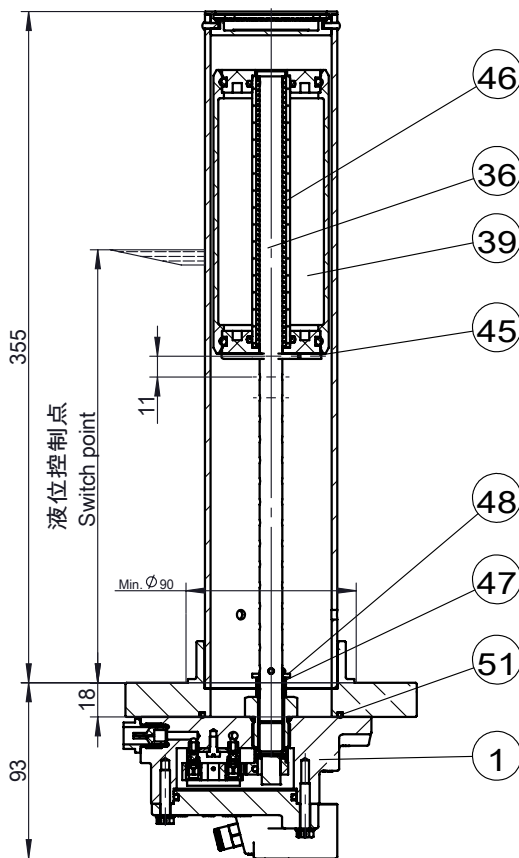
The LAT313 series low liquid level valve is specially designed for tank refueling trucks. It is used to control the minimum liquid level of the oil tank during refueling. With an adjustable function, it can accurately control the lowest position of the liquid level. This design provides stable and reliable refueling performance for tank refueling trucks, ensuring that the liquid level is always maintained within a safe and efficient range.

Technical Parameters

1. 工作压力 / Working Pressure: 0.8 MPa;
2. 温度范围 / Temperature Range: -40°C ~ 80°C;
3. 主体材料 / Primary Material: Aluminum Alloy.



- 1--供气口 / Supply Port
- 2--工作口 / Working Port
- 3--排气口 / Exhaust Port



水液位控制点 Switch point in water	燃油液位控制点 Switch point in fuel oil	可调范围 Adjustable steps	备注 Note
≈100	≈130	12×11	

序号 Item	代号 Part No.	名称	Description	数量 Qty.	备注 Remarks
1	AT2313-0	2位3通磁控阀	2/3-way magnetic control valve	1	
3	NV3S392-20S	调节杆	Adjusting rod	1	
4	NV3S-30	浮筒	Float chamber	1	
5	NV3S-01	弹性插销	Elastic pin	2	
6	NV3S-02	弹簧	Spring	1	
7	NV3S-03	弹簧	Spring	1	
8	NV3S-04	垫圈	Washer	1	
11	70X3	O形密封圈	O-ring	1	